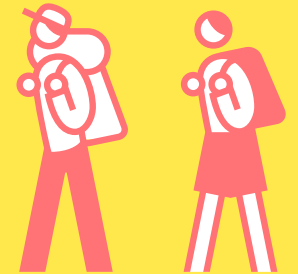
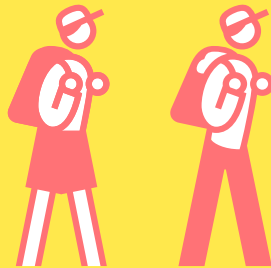


SL



I-PORTUNUS HOUSES VOL.4

OW



MOBI

LITY



Scenario for the Future of Mobility in Culture

EDITORS

Nancy Duxbury
Dea Vidović

AUTHORS

Dea Vidović
Ana Žuvela

**PARTICIPANTS IN THE
SCENARIO FOR THE
FUTURE WORKSHOP (IN
ALPHABETICAL ORDER)**

Toni Attard
Philipp Dietchmair
Vedran Horvat
Dea Vidović
Ana Žuvela

**FACILITATOR OF THE
SCENARIO FOR THE
FUTURE WORKSHOP**

Jonas Drechsel

COORDINATOR

Marta Jalšovec

LINGUISTIC VERSION

Original: EN

ABOUT THE PUBLISHER

To contact the Kultura
Nova Foundation,
please write to:
info@kulturanova.hr

Manuscript completed
in June 2022

This publication
is available on the
internet with the
option to download
the full text from:
kulturanova.hr
culturalfoundation.eu
mitost.org
i-portunus.eu

Please use the
following reference to
cite this volume:

Vidović, D. and
Žuvela, A. (2022) *Slow
Mobility: Scenario for
the Future of Mobility
in Culture. i-Portunus
Houses, Volume 4.*

Zagreb: Kultura Nova
Foundation.

Please use the
following reference for
in-text citations:

Vidović and Žuvela (2022)

The opinions expressed
in this document are the
sole responsibility of
the authors and do not
necessarily represent the
official position of the
European Commission.

This publication was produced and published within the “i-Portunus Houses – Kick-Start a Local Mobility Host Network for Artists & Cultural Professionals in All Creative Europe Countries” implemented, on behalf of the European Commission, by a consortium of the European Cultural Foundation, MitOst e.V. and the Kultura Nova Foundation.

8 INTRODUCTION

**12 SCENARIO FOR THE FUTURE
OF MOBILITY IN CULTURE:
A EUROPEAN IMAGINARY**

**36 FORWARD-THINKING
CULTURAL POLICY AGENDA**

48 SLOW MOBILITY

98 TAKE TIME

107 REFERENCES

108 IMPRESSUM

INTRODUCTION

In the framework of the i-Portunus Houses research on mobility in culture in Europe, conducted by the Kultura Nova Foundation, we created *Slow Mobility: Scenario for the Future of Mobility in Culture*. This research was part of the i-Portunus Houses project, implemented on behalf of the European Commission by a consortium of three partners – the European Cultural Foundation (coordinator), MitOst and the Kultura Nova Foundation. The project was dedicated to: 1) testing and analysing various transnational mobility schemes for the cultural sector, including granting support for local hosts from all Creative Europe countries for the mobility of artists and cultural professionals (ACPs), and 2) research on mobility in culture in all Creative Europe countries. In the study, the mobility of artists and cultural professionals was understood as their temporary, cross-border travel to create (the working purpose), connect (networking opportunities), explore (creative research) and learn (education and capacity-building opportunities). A four-volume publication was produced as a result of this study. This last part of the publication is the *Scenario for the Future of Mobility in Culture*. The scenario is the cumulative result of theories, a data set, and analyses of the collected data that were carried out within the research and are presented in the first three volumes of the publication.

The cardinal part of the research consisted of future planning, a process of creating strategic narratives about the future of mobility in culture. This planning offers possibilities to consider mobility in culture from different perspectives and influence future decisions that could have a profound impact on the culture sector and its mobility practices. There are many possible scenarios for the future of mobility in culture – it is impossible to forecast one story as exclusive. At the same time, each scenario includes many narratives, combines dif-

ferent factors and actions and generates small stories about what can happen and how to react. They also concretize ideas and offer different actions and mechanisms for various actors that could be tailored to specific local contexts and their desires, needs and interests. Therefore, the narratives of the future are developed through strategic planning.

The concept of slow mobility – the strategic narrative of the future of mobility – was generated during the workshop retreat that took place in Terme Tuhelj (Croatia) from 26 to 29 March 2022, with the invaluable contribution of the project partner (Philipp Dietachmair) and researchers (Ana Žuvela, Vedran Horvat and Toni Attard). Dea Vidović led the process, and the workshop was facilitated by Jonas Drechsel. During the workshop for scenario planning, we used the “three perspectives on ‘the future’ and futures” methodology.

The first step of this methodology includes a collective view of “like official future” under the “fiction of probable reality,” a term coined by Luhmann scholar Elena Esposito. The workshop team considered what would remain and imagined an official future as a “status quo future” within the existing cultural policy frame that has been generated by research data and many previous studies, and includes old and new impediments to mobility and challenges for the culture sector.

In addition, this methodology includes alternatives that are known to the team and therefore plausible to them. In this phase, the workshop team explored what we need more of and imagined plenty of plausible narratives found today that can become the future, such as *new collectivity*,

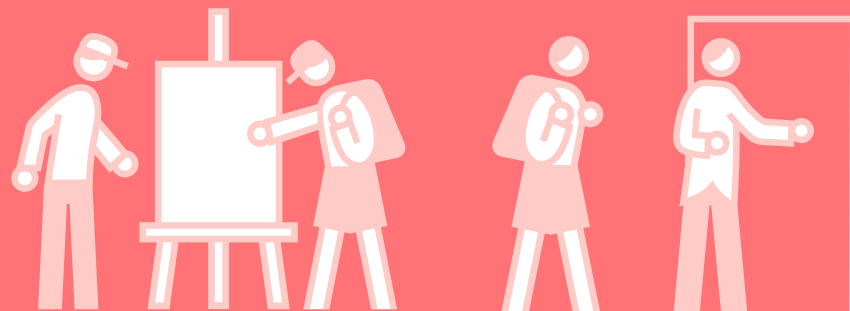
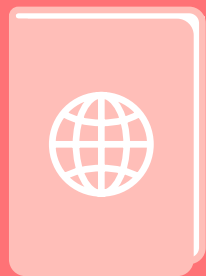
co-creation, conviviality, Limitech, new welfarism and green mobility. Based on these alternative scenarios, the results of the study (presented in Volume 2 of this publication) and the evaluation of i-Portunus Houses grantees (presented in Volume 3 of this publication), we formulated recommendations for the current cultural policy system under the sustainable mobility concept presented in Volume 2 of this publication.

Finally, the team members opened their eyes to an alternative utopian narrative, considering what is new in this narrative and what is desirable for the future. As a result of this part of the scenario-planning process, the team chose the term *slow mobility*, a provocative and engaging exploration of utopian alternatives for mobility and the whole system behind it. While plausible narratives are possible in the current cultural policy framework, the *slow mobility* concept requires a radical shift of the official paradigm – the whole system and its cultural policy.

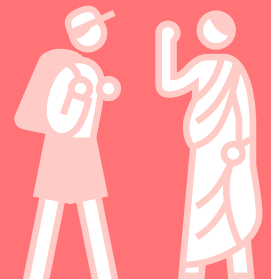
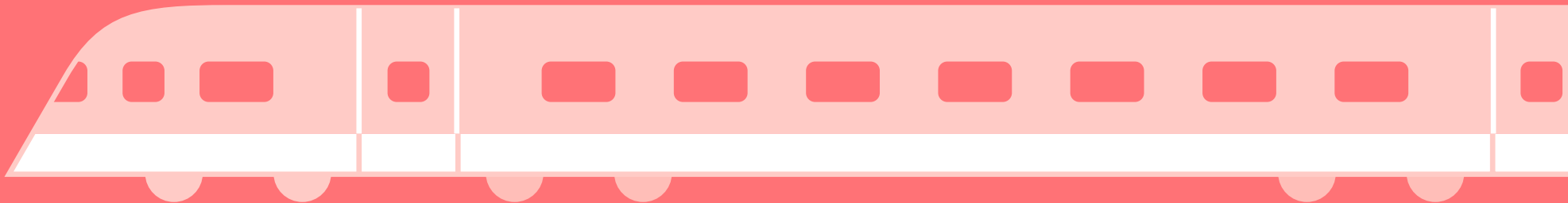
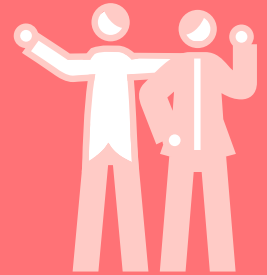
This volume presents the main context and theoretical background of the concept of slow mobility, our definition of slow mobility and the variety of principles on which it is based. It is a future-oriented strategic narrative for better mobility in culture in the coming years. It could be an essential resource and starting point for all key mobility actors (artists/cultural professionals, hosts and funders) interested in exploring and considering multiple and divergent ways in which mobility could evolve.

We offer this concept for further exploration and for assessing all designed actions and mechanisms. Be free to add your own actions according to your needs and the specificities of the national policy, local context, artistic discipline, cultural field and sector.

SCENARIO FOR THE FUTURE OF MOBILITY IN CULT URE:



A EUROPEAN IMAGINARY



ANTIC IPATIO



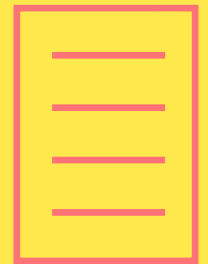
Proposing a scenario for the future in present times is nothing short of aiming at a moving target from a continuously changing position. Projecting ideas of the future requires consciousness of time,

grasping the current state of the art and the anticipation of an indefinite future. Theoretically, targeting the future and invading its unknown territory is an avant-garde endeavour⁽¹⁾ insofar as this scenario opens up the uncharted domain of drafting an avant-garde policy for the future, that is, avant-garde from the current perspective yet ordinary from the perspective of the future state of the art.

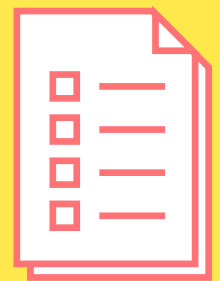
(1) The reference and inspiration for this paragraph are drawn from Jürgen Habermas' article "Modernity versus Postmodernity", published in 1981.

The first knot to untie is to frame an indefinite future built on the recognition of the elusive, transitory and ephemeral in the scope of the policy. Policy is stern and oriented towards a course of action that addresses and (ideally) solves public issues and problems. It is locked in a combination of governments' responses in the forms of laws, regulations, provisions and so on. Policy is very

much about the previous and current state of affairs, which are (rather often) extremely pragmatic from the political point of view and very contextual from the social and cultural points of view.



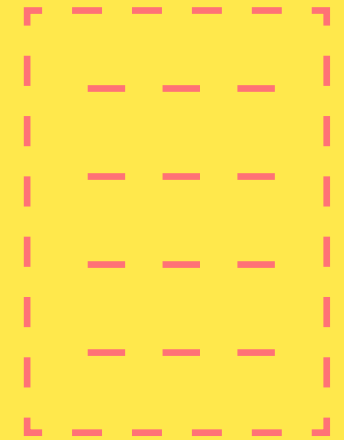
POLI CY



POLICY AND FUTURE

Why focus on policy at all in the projections of the future? A policy can be much more than what governments do or do not do as it interrelates with the political, economic, social, cultural, administrative and, more recently, ecological environment. As such, it drafts and shapes realities enabling or curtailing needed shifts that (should) follow ongoing transformations in all of those environments,

creating good conditions for the maintenance, nurturing and flourishing of harmonized and sustainable ecosystems. For this to happen, different forms of policies are needed. They can be named progressive or visionary, but, in any case, they need to be responsive and attuned to the circadian rhythms of the world that they attempt to regulate.



COMPLEXITY OF THE WORLD

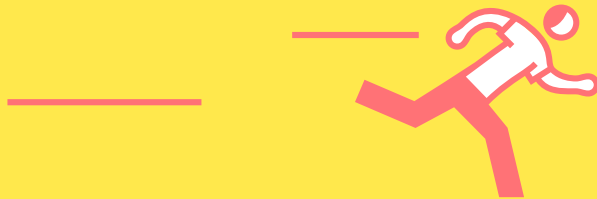
The world as it stands now is complex, unprecedented and difficult to digest from the point of view of public policies, social care and equity. The insatiable quest for endless growth driven by the neoliberal dogma encompassing the crumbling of late capitalism, the demise of welfarism and the rise of destructive populism has not only been overriding the socio-cultural and political systems but has brought nature's ecosystem to the edge of its threshold of disaster. Moreover, social system transformations have been reflected in various supranational agendas and attempts to counteract them have been

made. In parallel, the issue of nature's destruction has been creeping into the mainstream discourse for decades now, ranging from moderate scientific pleas for action to the current fully fledged urgency alarms. As a result, climate change has become a fact that can no longer be overlooked, along with the deepening of the social divides, discrimination and poor living conditions.



Simultaneously, the world has never been as interconnected, resulting in the high dynamics of physical movement of people and free, rapid movement and direct access to different types of knowledge and experiences. This interconnectivity has

yielded numerous effects – from expounding cultural diversity and rights, leading to vast social groups gaining their voice and position, to the omnipresence of fast policies that cause frictions between global trends and local needs and ways of living.



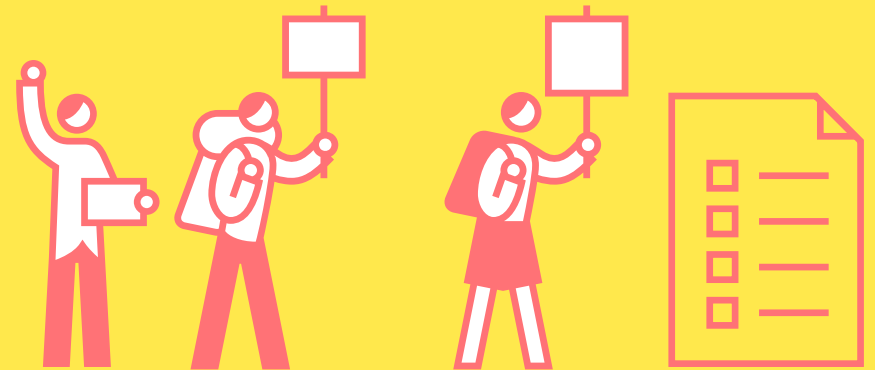
INTERCONN ECTIVITY



FAST POLICY AND FRICTIONS

The concepts of fast policy and frictions are pertinent to the topic of mobility. Fast policy deals with enabling and sustaining mobility through social practices and infrastructure, leading to complex policy transferences from one place to another and causing policy flows and frictions (Peck and

Theodore, 2010). Frictions refer to aspirations for universality and the fact that universality comes to life through the "sticky materiality of practical encounters" (Tsing, 2005: 1). Policies emerge from the sticky realities of daily life as messy hands-on experiences (Peck and Theodore, 2010; Tsing, 2005).

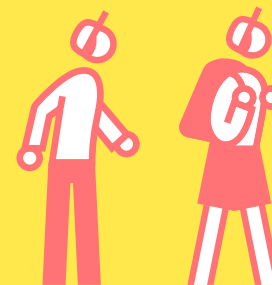


GLOBAL AND LOCAL



Along this line, a scenario for future policy must consider the dialectics between universality and materiality, smooth global flows and sticky local grids,

imposing a dominant narrative and opening up a space for particularities and specificities of practices without imposing prejudice or expectations.

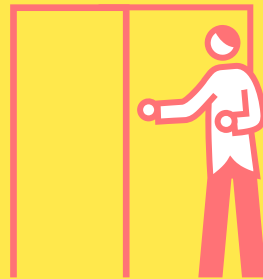


Calibrating such a look ahead in the European context is becoming more demanding daily. Europe is a continent of rich diversity that also has a number of economic, political and social disparities between

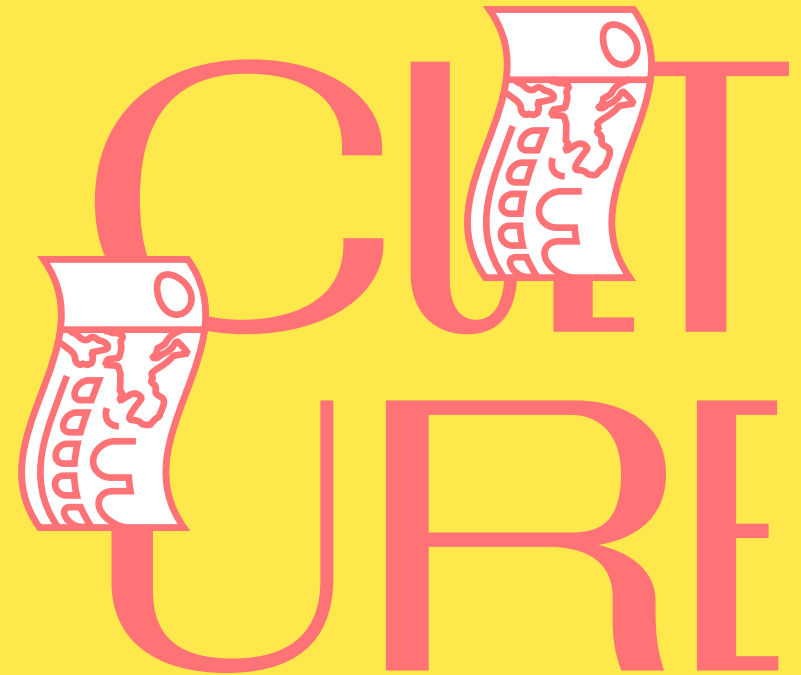
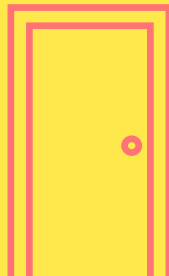
EU and non-EU countries and EU state members. The Europe of today is dramatically affected by the Russian aggression towards Ukraine that followed the pandemic, environmental urgency and the years of refugee and migrant crises resulting from the ongoing conflicts in Syria, Yemen, Afghanistan, and many other places all over the world. All these crises have become a permanent state validating the existing principles that structure the society (Salazar, 2020).

EU

RO



PE



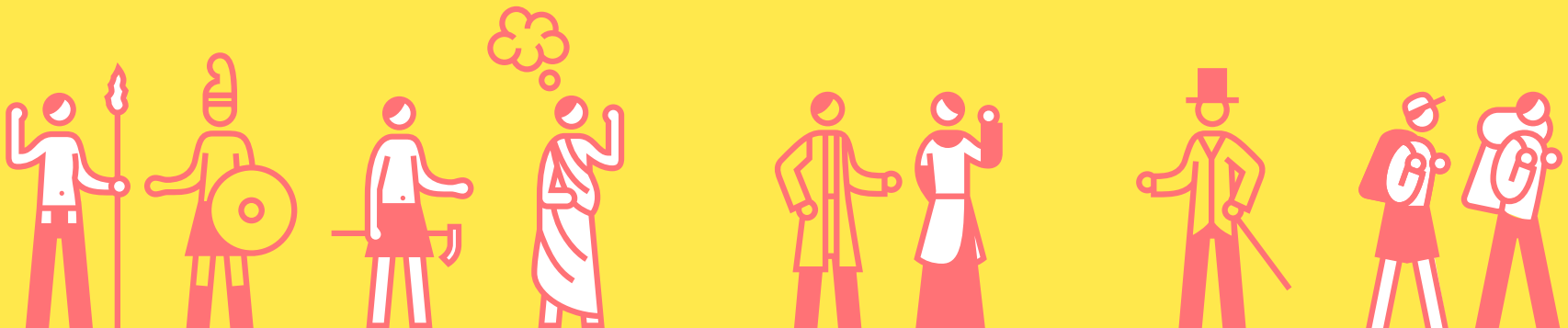
These multidimensional challenges of the 21st century, which have accumulated in the last several decades, bring a variety of impediments to the cultural sector. Specifically, cultural values are affected by economic growth, industrial development,

efficiency, entrepreneurship and innovation, flexibilization, project logic, unstable working conditions and precarity, non-cultural metrics and economic indicators as well as the individual experiences of consumers (Reset, 2022).

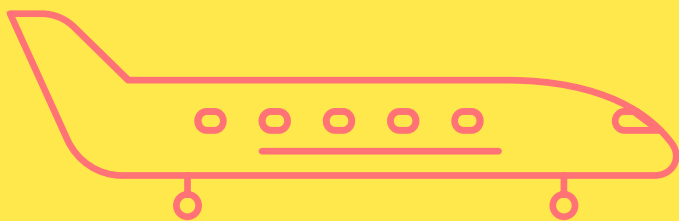
MOBI LITY

As mobility in culture is as ancient as culture itself (Salazar, 2022), it is inextricably linked to the cultural ecosystem and its existing nature and principles. In such a world of culture, the necessity to connect and exchange with places as origins, not as destinations, is recognized as vital for our future. The focus on places comes from their ability to nurture equity and reciprocity in the localities. Movement in culture has been considered

an experience of self-actualization that oils the machinery of place discovery, bonding and development (Tsing, 2005). However, mobility in culture has not been smooth.



IMPE DIME NTS



Insufficient funds, lack of information and infrastructure, informal and formal restraints on travel and immigration policies, bulging gaps in intercultural communication and understandings and differences in historical trajectories that impose exclusion, prejudice and particularizing are just some of the regular occurrences

that are part of cultural mobility. On top of these, mobility as physical motion through a fossil-fuelled means of transport has become a severe issue of environmentally responsible behaviour and operational choices. The pandemic has shown that mobility can have different varieties, but the question is whether those varieties work.

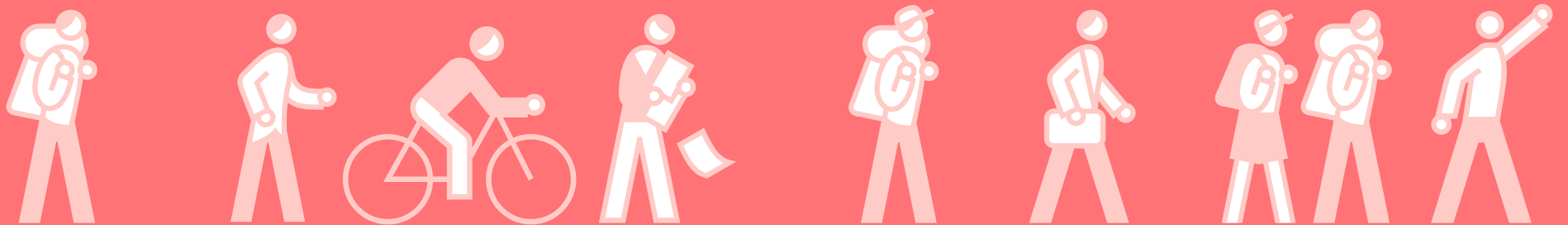


NEW POLICY AGENDA

Needless to say, mobility in culture needs to experience a major shift. Nevertheless, to make this shift within the purpose of mobility, that is, to turn from quick and frequent travelling to an altered mobility concept grounded in sustainable dynamics rather than growth expectations, altered thinking about the future cultural ecosystem must necessarily involve a new policy agenda. Otherwise, the "business-as-usual" formula will remain in force.



FORWARD-THINKING CULTURAL POLICY AGENDA



BEYOND ECONOMIC GROWTH



A radical shift in the cultural ecosystem requires the replacement of the global economy with a new economy for the 21st century, taking into account a variety of implications for culture and mobility in times of uncertainty

and their adaptation to environmental urgency. This transformation implies alternative economic models that will reflect a variety of contexts, such as the sharing (Sundararajan, 2016), circular (Webster, 2017), doughnut

(Raworth, 2017) and mission (Mazzucato, 2020) economic model principles that would lead to a post-growth world, equal opportunities and access to prosperous living conditions for all.

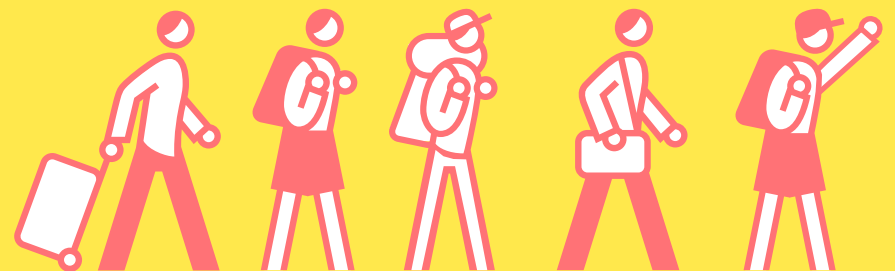


COLLECTIVE SOLUTIONS



This model means the acceptance and importance of collective solutions that imply common goods,

equity, equality, fairness, humanities and the creation of a caring state in light of the diminishing welfare state.

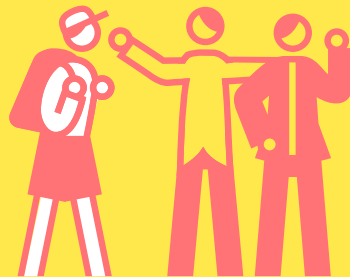


CARE

E

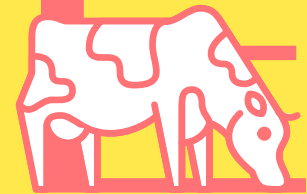
Collective actions must involve care as a guiding priority of public action, enmeshing it into institutional settings and public services that will produce greater satisfaction and well-being rather than profit-seeking, commercialized services (The Care Collective, 2020). However, the caring principle is not a sufficient transformative agent on its own. The modes of its delivery are crucial. They involve shorter

working hours in paid work, allowing adequate time and resources for taking stock of others while slowing down and maintaining relational continuity (The Care Collective, 2020). Care in this context is not a single-dimensional concept but a “social capacity and activity involving the nurturing of all that is necessary for the welfare and flourishing of life” (The Care Collective, 2020: 5).



LOCAL

ITIES



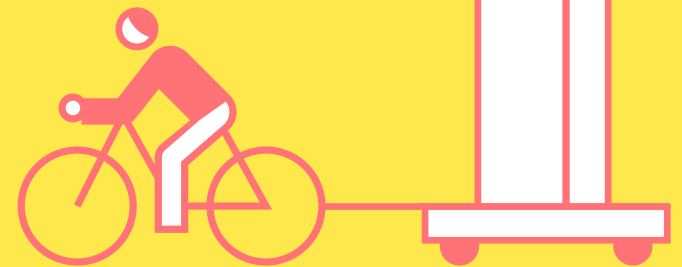
Radical shifts within the policy framework for arts and culture should consider all aspects of the existing ecosystem. Building the foundation for this turn means changing economics and socio-cultural fields to increase the importance of localities (villages, rural and suburban settings, neighbourhoods, districts, quarters, municipalities, towns and cities). In local communities, political, economic, social, environmental and cultural

trends materialize and configure a complex social order, in which huge inequalities and disparities exist. Localities represent a myriad of potent and diverse points that truly chart the reality of contemporary Europe. Their importance for the future lies in their potential for building interdependence among citizens, care and togetherness reconfigured as the most valuable aspects of local communities (Vidović et al., 2021).

CHANGES IN CULTURAL VALUES

By breaking with economic rationalism and instrumentalist values, reclaiming intrinsic values of culture and setting collectivism at the heart of the cultural ecosystem, arts and culture become vital for living together, society and humanity as well as for public life. As such, culture and arts are public goods that are publicly well funded, and they are the cornerstone for initiating a new commitment to well-

functioning democracy in the future based on climate justice, equality and emancipatory, shared and participatory ethics.



CULTURAL POLICY IMPLEMENTATION



Based on these changes in goals and values, cultural policy thinkers and doers have to elaborate on this in practice and restructure ways of working and moving in culture. With alternatives

to offer, the cultural system will better serve the current needs of all actors – from cultural policy makers, artists, cultural workers and cultural institutions to citizens.



SLOW

MOBI

LITY



SLOW

M



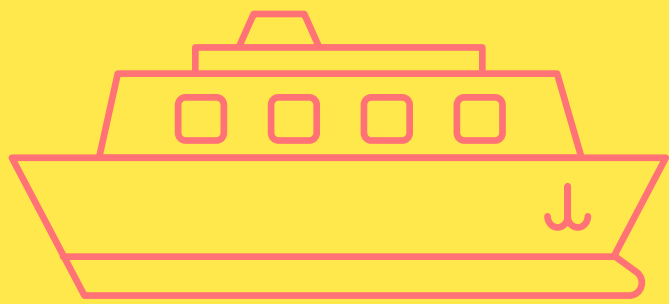
MOVE



MEN

T

S



Slow mobility is not an intentional extension of the previously established slow movement(s). However, it corresponds to the main principles of those movements by proposing

to decrease the pace of production, work, interaction and living in general.

SLOWNESS AS A PRINCIPLE



The introduction of slowness or slowing down in cultural mobility is a step towards embracing slowness as one of the principles that can add to the achievement of

more meaningful, calmer, healthier and egalitarian modes of functioning in and with the cultural field for all the actors involved – from individuals to communities.



RIGHT NOT TO MOVE



The notion of slow mobility implies moving, sharing and connecting and the right not to move.

CHANG GE THE GOAL



Slow mobility relies on a shift to short distances, less travel, slow travel and a longer duration of stay.



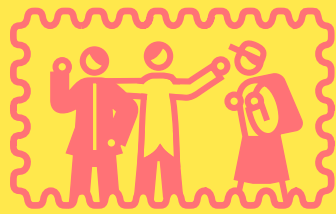


ADAPT ABILITY, RESP ONSIBILITY & ACCESS

Slow mobility requires a new social economy in which citizens are socially adaptable and responsible to nature. It fosters and supports fair and equal access to mobility for all

actors, regardless of their origin, status and levels of development.

TRAVEL



Slow mobility encourages short-distance choices wherever possible and travelling less but making more out of the journey. It requires a radical sense of time and space. It refers to getting back in touch with the surroundings while travelling by train or

combining it with other forms of eco-friendly and shared transportation. Slow travel involves taking more time for the journey itself and implies stops en route to visit exhibitions or other cultural events, to meet friends and colleagues and so on.

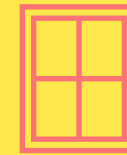
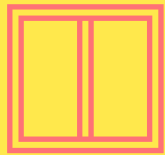
The meaning of slow mobility is wider than that of travel itself. It is more about the policy instruments and mechanisms that will

create the conditions for the process and the time to find solutions in many areas.

PROCESS & TIME

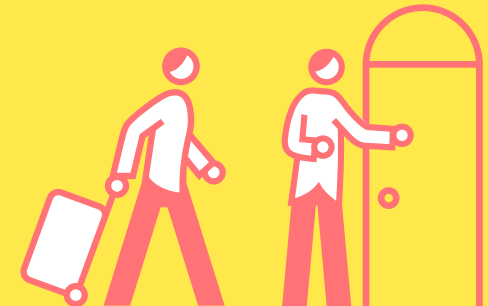


LOCALITIES



Slow mobility responds to local needs and realities. It links to the slow movement by shifting the focus to the localities, more extended stays in the destination, the importance of bio and cultural regions and the

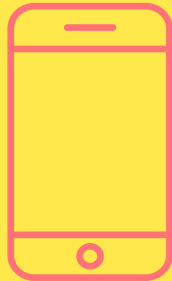
vitality of organic forms of production, presentation, representation, exchange and distribution of cultural and artistic work. It is locally relevant, engaged and connected to the local communities.



SLOW



IN



FRA



STRUCTURE



Slow mobility needs the development of slow infrastructure, such as slow trails and networks, green

transport, paths, pedestrian and cycle paths, accessible transport and smart and new breeds of technology.

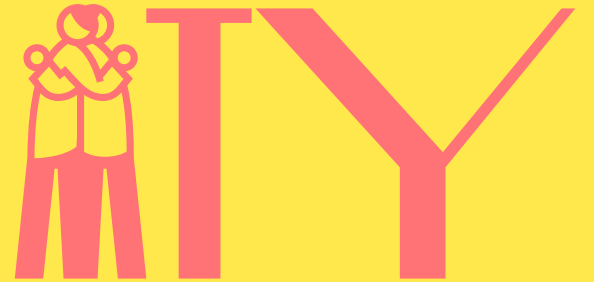
WELL- BEING



Slow mobility must be well organized in the sense of time, accessible, comfortable and easy for people, offering a way to take control of the daily routine and use it to benefit life.



SAFETY



Slow mobility is the key to providing safe and respectful movement from one place to another, offering access to local communities and reducing environmental impacts.



FORWARD- THINKING CULTURAL POLICY



The full realization of the slow mobility concept in culture is possible only within the new and forward-thinking cultural policy agenda, which includes many different lines of fair,

equitable, participatory and planet-centric policy designs and instruments.

Feel free to use the titles on this page as a menu to quickly navigate through this section.

VALUES

Social solidarity

Economic solidarity

Environmental solidarity

VISION

A world based on social, economic, environmental and cultural justice, where slow mobility is an inherent part of a democratic, fair, equitable, sustainable and planet-centric cultural ecosystem.

MISSION

Responding to the urgency to connect, we mobilize resources to facilitate the development of artistic and cultural knowledge and its exchange through equitable and slow mobility in culture.



SYSTEMIC GOALS

Shifting the focus from fast mobility to prolonged local interactions within transnational and cross-border flows of people, goods and ideas through responsive policies that recognize and address the urgent need to connect.

Embracing slow cultural mobility as an integral part of artistic and cultural practices to contribute to stability, sustainability, security and a lower carbon footprint of arts and culture.

PRINCIPLES

Decolonization

Long-term investment

Intersectionality

Grassroots knowledge

Inclusive partnership

Participatory democracy

Participatory governance

Trust building

KEY METHODS

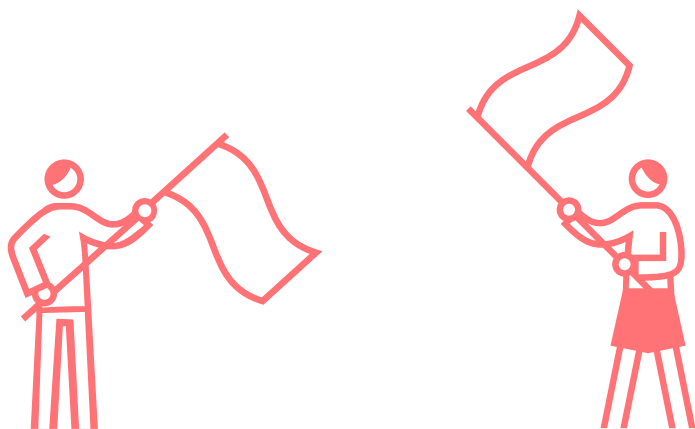
Universal basic income (UBI) in arts and culture

Fair remuneration

Free day



VALUES



Social solidarity

Democratization of access to funding and slow mobility for all disadvantaged actors without discrimination based on race, ethnicity, colour, social status, language, religion, disability, gender, age, sexual orientation, political opinion or any other grounds.

Economic solidarity

Consider and change unsuitable and outdated financial regulatory frameworks and tax systems according to the specificities of respective artistic disciplines, cultural fields and sectors, local contexts and the cultural diversity of race, ethnicity, colour, social status, language, religion, disability, gender, age, sexual orientation, political opinion and other grounds.

Environmental solidarity

Fair treatment, mutual respect and meaningful involvement of all people regardless of their race, colour, national origin, income or territory within the development and implementation of environmental policies and transition.

► Add further values of Slow Mobility



SYSTEMIC GOALS

Shifting the focus from fast mobility to prolonged local interactions within transnational and cross-border flows of people, goods and ideas through responsive policies that recognize and address the urgent need to connect.

Tactics	Actions
HOLISTIC RESEARCH ON THE URGENCY TO CONNECT AND SLOW MOBILITY	<ul style="list-style-type: none">Detecting and identifying the urgency to connectMapping current policies and slow practicesAssessment of the needs of movement and non-movement in arts and cultureEvaluation of the long-term impact of slow mobility in culture
PARTICIPATORY MECHANISMS FOR NEW POLICY DESIGNS	<ul style="list-style-type: none">Development of participatory methods and procedures within cultural policy making, implementation and evaluationCapacity-building programme on the participatory mechanism for policy making for allParticipatory practices within local cultural policy
SLOW LOCAL INFRA-STRUCTURE	<ul style="list-style-type: none">New legislation for slow mobilityDevelopment of slow mobility infrastructureDevelopment of digital infrastructure as a public goodCapacity-building programme on slow mobility infrastructure

Embracing slow cultural mobility as an integral part of artistic and cultural practices to contribute to stability, sustainability, security and a lower carbon footprint of arts and culture.

► Add further systemic goals of Slow Mobility

Tactics

Actions

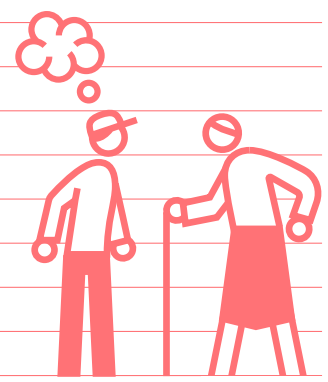
Tactics

Actions

REALIGNMENT OF EXISTING FUNDING AND PROGRAMMES FOR SLOW MOBILITY
 Creating new guidelines for adapting existing funding programmes for slow mobility in culture as an integral part of arts and culture
 Creating criteria for democratizing access to an existing funding programme for slow mobility in culture

PILOT PROGRAMMES FOR SLOW MOBILITY IN CULTURE
 Creating a new grant scheme for slow mobility in culture through a participatory process
 New guidelines for slow mobility in culture
 Development of an accessible and equitable funding programme for slow mobility in culture
 Testing a new grant scheme for slow mobility in a selected number of diverse local and national settings covering EU and non-EU territories (e.g., Southeastern Europe, Western Europe, Nordic countries, etc.)

IMPLEMENTATION OF SLOW MOBILITY IN CULTURE
 Introduction of slow mobility across states in the European territory



PRINCIPLES

Decolonization

Promote the decolonization of cultural relations and decolonize mobility practices through equal-to-equal dialogue with local actors and equally valued people, artworks, cultural goods and services.



Intersectionality

Intersectionality refers to the intersectoral approach, with implications for many public policies – foreign affairs, labour and social affairs, finance and tax policy, the environment, construction and infrastructure, cultural policy, etc.

Inclusive partnership

Recognizing the different and complementary roles of all actors and approaching them for partnering is vital for funding slow mobility and providing mobility infrastructure.

Participatory governance

Collaborative actions of public, private and civil actors at the local level for public purposes.

Trust building

Inclusive partnership requires an improved capacity for balanced relations between bottom-up and top-down approaches by building and maintaining a higher level of trust among all the actors involved for further collaboration.

Long-term investment

Instead of a one-off, ad hoc and project-based investment, long-term investment secures the long-term commitment of everyone involved as well as the dynamics and diversity of the culture sector and local development. It maintains long-term relationships among actors by producing positive social, economic and environmental effects.

Grassroots knowledge

Grassroots initiatives mobilize the local community and produce local knowledge, which helps to identify and evaluate the challenges and changes within the social, economic, environmental and cultural ecosystems at the local level.

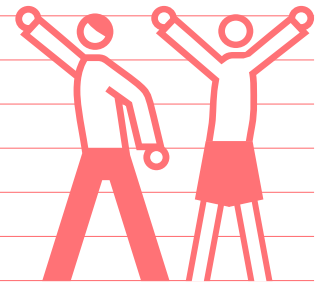
Participatory democracy

Participatory democracy allows all actors to participate in the decision-making process in different fields (funding, decisions on local investment, cultural programming, etc.) and take shared responsibility for decision making that affects their interests and needs.

▶ Select what is appropriate to you and add further principles of Slow Mobility

Lined writing area for notes under 'Participatory democracy'.

Lined writing area for notes under 'Grassroots knowledge'.



KEY

MEET

HODS

**FOR CHANGING WORKING
CONDITIONS IN ARTS & CULTURE
TO SUPPORT SLOW MOBILITY**

Methods	Descriptions	Actions
UNIVERSAL BASIC INCOME (UBI) IN ARTS AND CULTURE	Based on the logic of wealth redistribution in society, universal basic income (UBI) provides a guaranteed regular income for artists and cultural freelancers, which is enough to meet local standards and ensure economic security. In parallel to UBI, they can earn additional money without their UBI being affected.	Through a participatory process, develop a model of UBI Regularly provide UBI Evaluate the UBI model on an annual basis to adapt the model to the evolving needs of artists and cultural freelancers
FAIR REMUNERATION	Improving the well-being, living and doing of artists and cultural professionals by providing fair remuneration as proper validation of their work according to specificities of respective artistic disciplines, cultural fields and sectors, and local standards and living conditions.	Through a participatory process, develop a model of fair remuneration (with a minimum guaranteed fee) according to the different needs of disciplines, fields, sectors and contexts Set criteria for fair remuneration and decent working conditions in grant schemes Include fair remuneration as an eligible cost
FREE DAY	Define a day of the week for reading and thinking and avoid meetings, communication and email Encourage grantees/peers to define a day of the week for reading and thinking and avoid meetings, communication and email	

Feel free to use the titles on this page as a menu to quickly navigate through this section.

KEY MECHANISMS OF SLOW MOBILITY

For transferring the concept of slow mobility from the theory and policy rhetoric to practices and everyday behaviour of mobility actors, there is a variety of mechanisms that can be useful in making slow mobility a possible reality in culture.



FUNDERS

Slow Mobility Label

Slow Mobility Award

Fair grant making

Flexible grant making

Eligible costs

HOSTS

Slow Mobility Label

Slow Mobility Award

Slow Agreement

Circular touring

Slow travel

Meaningful stay

Care

Slow audience

Fair remuneration

Fair access

ACPS

Slow Mobility Label

Slow Mobility Award

Slow Agreement

Care rider

Circular touring

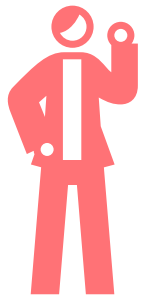
Slow travel

Meaningful stay

Fair remuneration

MECHANISMS OF SLOW MOBILITY FOR FUNDERS

SLOW MOBILITY LABEL



Define the minimum standards for earning the *Slow Mobility Label* according to different roles and actions in mobility practices – artists, cultural professionals and hosts

Through a participatory process, develop a model for the *Slow Mobility Label*

Establish a process for assigning a *Slow Mobility Label*

Create a participatory decision-making process

Assign the *Slow Mobility Label* on an annual basis

SLOW MOBILITY AWARD

Establish the *Slow Mobility Award* according to different roles and actions in mobility practices – artists, cultural professionals and hosts

Through a participatory process, develop a model for the *Slow Mobility Award*

Establish a process for assigning a *Slow Mobility Award*

Create a participatory decision-making process

Assign a *Slow Mobility Award* on an annual basis

Organize a publicly visible *Slow Mobility Award* ceremony

FAIR GRANT MAKING

Context and needs based

Establish a flexible grant scheme according to the diversity of local contexts

Provide greater support for localities without national and/or local funding

Co-create a quota for underrepresented territory (countries, rural areas)

Set a grant scheme to target a specific territory

Underrepresented groups

Co-create criteria to democratize access to funding for different vulnerable and minority groups

Co-create a quota for underrepresented groups

Establish a grant scheme to target specific underrepresented groups

**FLEXIBLE
GRANT
MAKING**

Create a flexible submission process and offer applicants to choose the option that best suits their capacity

- Adapt submissions to the different capacities of grantees:
- submitting in different languages
 - submitting concept notes, after which only selected applicants will submit a full application
 - submitting a portfolio instead of a project
 - participating in an interview instead of submitting a written application
 - providing technical and content support for grantees lacking experience

Ongoing call

- Establish a grant scheme without a deadline
- Set multiple deadlines

Decision-making process

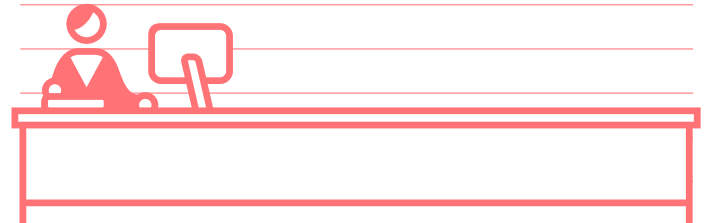
- Decentralize the power structure and decision process using different methods of decision-making within the selection process:
- peer review
 - random selection
 - participatory grant-making

**ELIGIBLE
COSTS**

Provide a wide range of eligible costs depending on grantees' needs that must:

- be included in the budget
- be fair and reasonable
- be compliant with the national regulatory framework (labour, social security, taxes, etc.)

› Create a flexible submission process and offer applicants to choose the option that best suits their capacity



MECHANISMS OF SLOW MOBILITY FOR HOSTS



SLOW MOBILITY LABEL

Develop your practices according to the *Slow Mobility Label*

Apply for the *Slow Mobility Label*

If you cannot apply for the *Slow Mobility Label*, create your own *Slow Mobility Manifesto*

SLOW MOBILITY AWARD

Develop your practices according to the *Slow Mobility Award* criteria

Apply for the *Slow Mobility Award*

SLOW AGREEMENT

Create a *Slow Agreement* for hosted **ACPs** for their slow or shared travel and a longer stay at the destination

Sign a *Slow Agreement* with hosted **ACPs**

Include slow mobility of artwork, equipment and any other materials in the *Slow Agreement*

Address the carbon neutrality of your work and that of **ACPs** in the *Slow Agreement*

CIRCULAR TOURING

Line up dates and align the calendar with other festivals, events and cultural venues to provide **ACPs** with possibilities for circular touring

Encourage **ACPs** to engage in circular touring

SLOW TRAVEL

Support **ACPs** in slow travel to their destination by:

- using slow means of transport
- stopping while travelling and visiting other places
- using public transportation, cycling or walking in the destination

MEANINGFUL STAY

Provide **ACPs** with a longer stay in the destination (long residencies, stay for the whole event/festival, etc.)

Provide support to connect hosted **ACPs**

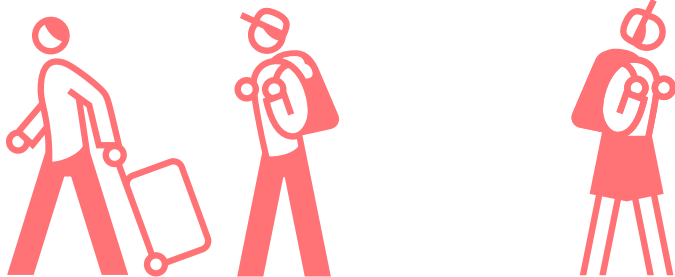
Provide support for engagement in the local context

CARE

Provide full care to **ACPs** (food, space for sleep and taking breaks, professional assistance in the case of illness or any kind of emergency)

Create time and space for rethinking *slow mobility* with hosted **ACPs** during their stay

MECHANISMS OF SLOW MOBILITY FOR ACPS



SLOW MOBILITY LABEL

Develop your practices according to the *Slow Mobility Label*

Apply for the *Slow Mobility Label*

If you cannot apply for the *Slow Mobility Label*, create your own *Slow Mobility Manifesto*

SLOW MOBILITY AWARD

Develop your practices according to the *Slow Mobility Award* criteria

Apply for the *Slow Mobility Award*

SLOW AGREEMENT

Sign a *Slow Agreement* with the host for:

- your slow travel
 - your sharing of travel
 - your longer stay in the destination
 - slow mobility of artwork, equipment and any other materials
 - carbon neutrality of your work and that of your host
 - encouraging the audience to adopt slow mobility by using public transportation, cycling and walking
-

CARE RIDER

Create your own care rider and provide it to hosts to act according to it

Include your care rider in the *Slow Agreement*

Refuse to work in inaccessible spaces

Respect hosts' working hours (staff, volunteers, outsourcing associates)

CIRCULAR TOURING

Line up dates and align calendars with festivals, events and cultural venues to provide possibilities for circular touring

Implement circular touring as standard for your touring practices

SLOW TRAVEL

Use slow means of transport

Stop while travelling and visit other places

Use public transportation, cycle or walk in the destination

MEANINGFUL STAY

Stay longer in the destination

Take time to connect with other hosted ACPs

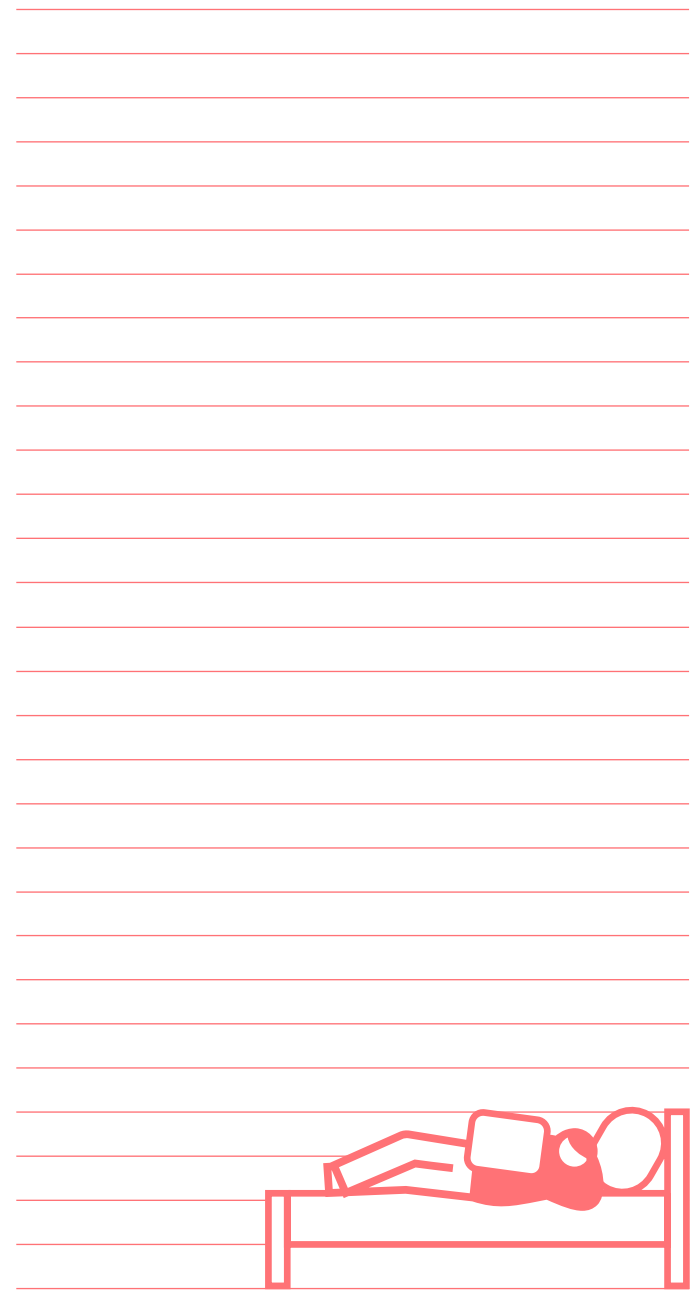
Engage in the local context

FAIR REMUNERATION

Insist on fair remuneration for your work

Insist on and provide fair remuneration of all involved in your work

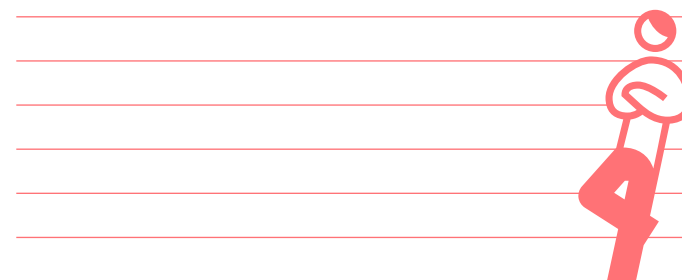
› Select what is appropriate to you and expand the mechanisms of Slow Mobility for ACPs

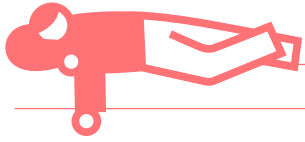


TAKE TIME

Create your Slow Mobility
by adopting any of these
items or adding new items.

Share your practices of
Slow Mobility by creating
a toolkit, giving a public
presentation, and so on.



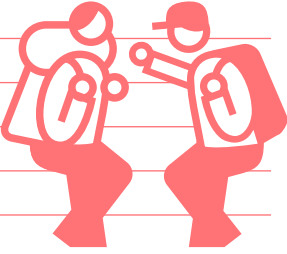


A series of horizontal red lines for writing, spanning the width of the page.



A series of horizontal red lines for writing, spanning the width of the page.

Blank lined area for text input on page 102.

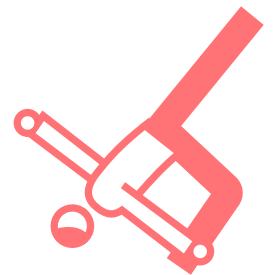


Blank lined area for text input on page 103.



References

- Care Collective, The (2020) *The Care Manifesto. The Politics of Interdependence*. London: Verso Books.
- Habermas, J. (1981) 'Modernity versus Postmodernity', *New German Critique*, No. 22 Special Issue on Modernism, pp. 3-14.
- Mazzucato, M. (2021) *Mission Economy. A Moonshot Guide to Changing Capitalism*. London: Penguin Books.
- Peck, J. and Theodore, N. (2010) *Fast Policy. Experimental Statecraft at the Thresholds of Neoliberalism*. Minnesota: University of Minnesota Press.
- Raworth, K. (2017) *Doughnut Economics. Seven Ways to Think Like a 21st-Century Economist*. London: Random House Business.
- Reset (2022) *For a Progressive Arts and Cultural Policy Agenda in Australia*. Available at: <https://resetartsandculture.com/> (Accessed: 1 September 2022).
- Salazar, N. B. (2020) 'Existential vs. Essential Mobilities: Insights from Before, During and After a Crisis', *Mobilities*. 16(1), pp. 20-34.
- Salazar, N. B. (2022) 'Mobility: What's in a Name?', in: Duxbury, N. and Vidović, D. (eds.) *Mobility in Culture: Conceptual Frameworks and Approaches. I-Portunus Houses, Volume 1*. Zagreb: Kultura Nova Foundation, pp. 18-35.
- Sundararajan, A. (2016) *The Sharing Economy: The End of Employment and the Rise of Crowd-Based Capitalism*. Cambridge and London: The MIT Press.
- Tsing, A. L. (2005) *Friction. An Ethnography of Global Connection*. New Jersey: Princeton University Press.
- Vidović, D. et al. (2021) *European Pavilion Programme Proposal Made by Kultura Nova Foundation*. Zagreb: Kultura Nova Foundation.
- Webster, K. (2017) *The Circular Economy: A Wealth of Flows*. The Isle of Wight: Ellen MacArthur Foundation Publishing.



TITLE
i-Portunus Houses
publication. Volume 4
*Slow Mobility:
Scenario for the
Future of Mobility
in Culture*

EDITION
"Kultura nova"

PUBLISHER
Kultura Nova
Foundation

FOR THE PUBLISHER
Dea Vidović

EDITORS
Nancy Duxbury
Dea Vidović

AUTHORS
Dea Vidović
Ana Žuvela

EXECUTIVE EDITORS
Tamara Zamelli
Marta Jalšovec

DESIGN
Superstudio
Design Projects

PROOFREADING
Proof-Reading-
Service.com

CORRECTIONS
Marta Jalšovec
Antonija Letinić
Tamara Zamelli

This publication
is available on the
internet with the
option to download
the full text from:
kulturanova.hr
culturalfoundation.eu
mitost.org
i-portunus.eu

This publication is a
part of the "i-Portunus
Houses – Kick-start
a local mobility host
network for artists &
cultural professionals
in all Creative Europe
countries" project
implemented with the
support of the Creative
Europe Programme of
the European Union.

The European
Commission's support
for the production
of this publication
does not constitute
an endorsement of
the contents, which
reflect the views only
of the authors, and the
Commission cannot be
held responsible for
any use which may be
made of the information
contained therein.

TYPEFACES
Francis Gradient
by Nikola Djurek,
Lumin Family
by Nikola Djurek

ISBN
978-953-8224-21-8
(i-Portunus Houses
publication)
978-953-8224-19-5
(Volume 4)

Zagreb, August 2022

Kultura Nova
Foundation,
Gajeva 2/6, 10000 Zagreb,
Croatia

This work is licensed
under Creative Commons
CC BY-NC 4.0 if not
explicitly stated otherwise.
The content can be freely
copied, redistributed,
remixed, transformed,
and build upon for non-
commercial purposes
only, and only so long as
attribution is given to the
authors and publishers,
changes made are
indicated and a link to the
licence is provided. The
licence can be found on:
<https://creativecommons.org/licenses/by-nc/4.0/>

